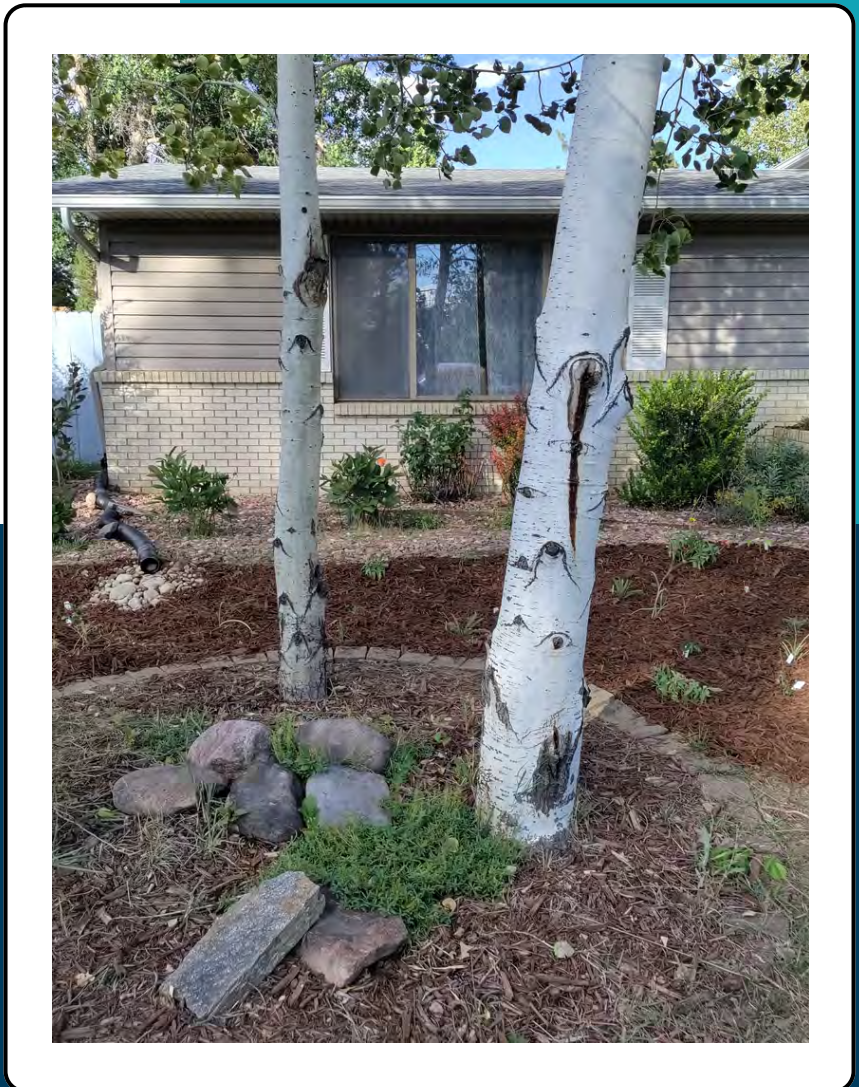


OCTOBER 2022

# RESIDENTIAL RAINGARDEN PILOT PROJECT

FULL SHADE PLANTING LAYOUT: 1B



PRODUCED BY

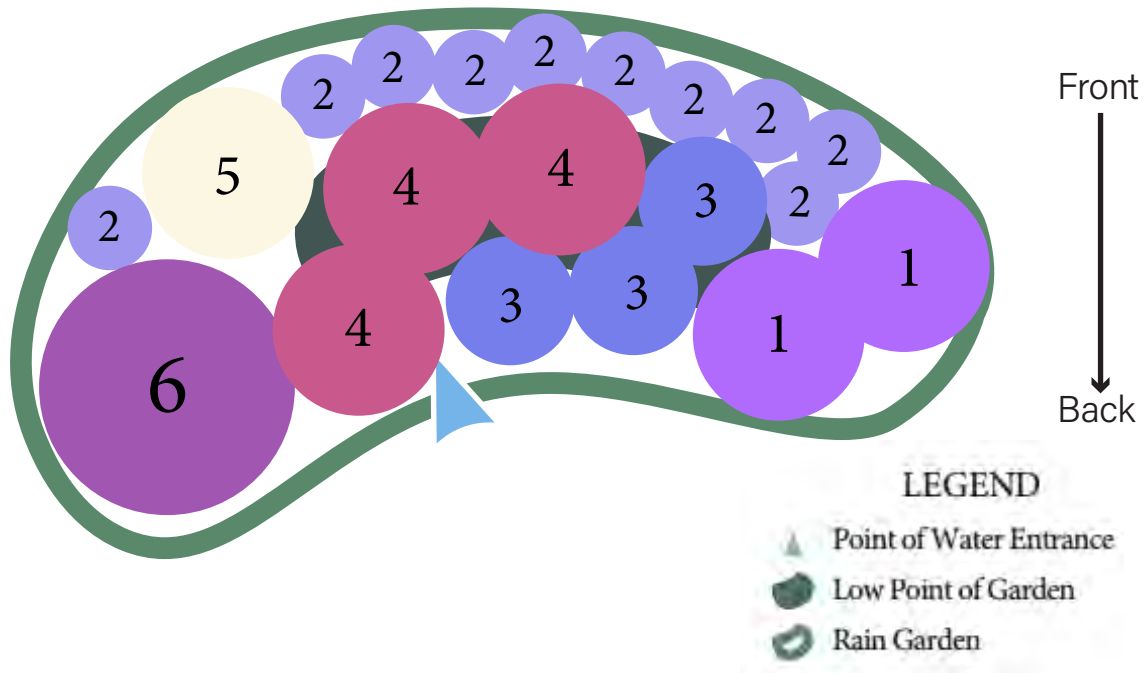


**COLORADO**  
Colorado Water  
Conservation Board  
Department of Natural Resources



**HORTICULTURE AND  
LANDSCAPE ARCHITECTURE**  
COLORADO STATE UNIVERSITY

# Rain Garden Layout - **Shade** **Design 1B - 50ft<sup>2</sup>**



- 1 **Beebalm - *Monarda fistulosa***
- 2 **Harebells - *Campanula rotundifolia***
- 3 **Rocky Mountain Columbine - *Aquilegia caerulea***
- 4 **Swamp Milkweed - *Asclepias incarnata***
- 5 **White Yarrow - *Achillea lanulosa***
- 6 **Winecups/Poppy Mallow - *Callirhoe involucrata***

## FULL SHADE 1B SUBSTITUTION LIST

All Plants on list are Native to the Rocky Mountain/Front Range Region unless marked\*

Layout Number	Original Plant	Substitution	Tier	Dimensions	Color
1	Beebalm	Creeping Phlox* ( <i>Phlox stolonifera</i> )	top	8" tall, 2ft spread	purple flowers, groundcover native to North America
		Rocky Mountain Columbine ( <i>Aquilegia caerulea</i> )	mid	1.5ft tall, 1ft spread	Light blue and white flowers
2	Harebells	Sierra Wild Ginger* ( <i>Asarum hartwegii</i> )	mid	6" tall, 1ft spread	foliage appeal, heart-shaped leaves, native to North America
		White Yarrow ( <i>Achillea millefolium</i> )	top	1-2ft tall, 1.5ft spread	white flowers, finely textured foliage
3	Rocky Mountain Columbine	Yellow Trout Lily* ( <i>Erythronium americanum</i> )	mid	6" tall, 8" spread	yellow nodding lily, speckled foliage, native to North America
		Celadine Poppy* ( <i>Stylophorum diphyllum</i> )	mid	1.5ft tall, 1ft spread	yellow mini poppy flowers, native to North America
4	Swamp Milkweed	Umbrella Plant* ( <i>Darmera peltata</i> )	low	3.5ft tall, 4ft spread	pink/white blooms, large serrated leaves, native to North America
		Wherry's Foam Flower* ( <i>Tiella wherryi</i> )	low	1ft tall, 1.5ft spread	white/pink flowers, foliage has purple veins and turns bronze in fall, native to North America
5	White Yarrow	Prairie Trillium* ( <i>Trillium recurvatum</i> )	mid	1.5ft tall, 1.5ft spread	deep red flowers blooming early, dormant in summer, native to North America
		White Wood Aster* ( <i>Eurybia divaricata</i> )	top	2ft tall, 3ft spread	daisy-like white flowers, bushy, native to North America
6	Winecups	Jack in the Pulpit* ( <i>Arisaema triphyllum</i> )	mid	1.5ft tall, 2ft spread	pitcher-plant like flowers, native to North America
		Crevice Alumroot* ( <i>Heuchera micrantha</i> )	top/mid	2ft tall, 2ft spread	purple foliage, native to North America

### Tiers:

**Top:** lowest water requirements, planted along the garden berm

**Mid:** average water requirement, planted on the sloping sides of the garden

**Low:** higher water requirements, planted in the basin, roots must withstand wet conditions up to 12 hours

## Shade Plant Guide Layout 1B



### 1. Beebalm (*Monarda fistulosa*)

Mature Height	2-4ft tall and 2-3ft spread
Care & Water	Once established, water once per week. Deadhead to promote blooming.
Flowering Time	May-September
Hardiness	Zones 3-9, plant 18" apart
Special Features and Notes	Attracts bees, butterflies, hummingbirds, and other pollinators. Deer and rabbit resistant. Prone to powdery mildew when overwatered.



### 2. Harebells/Bluebells (*Campanula rotundifolia*)

Mature Height	1ft tall and 1ft spread, stems are weak and the plant often bends over.
Care & Water	Once established, water once per week.
Flowering Time	June-September, periwinkle color flowers.
Hardiness	Zones 2-7, plant 10" apart
Special Features and Notes	Attracts hummingbirds. When grown from seed, the plants start blooming the second year.



### 3. Rocky Mountain Columbine (*Aquilegia caerulea*)

Mature Height	1-2ft tall with 1ft spread
Care & Water	Once established, water once per week. Deadhead to promote blooming.
Flowering Time	May-July
Hardiness	Zones 3-8, plant 15" apart

## Shade Plant Guide Layout 1B

Special Features and Notes	Attracts butterflies and hummingbirds. Deer and rabbit resistant with a pleasing scent. Will self seed to form a colony.
----------------------------	--



### 4. Swamp Milkweed (*Asclepias incarnata*)

Mature Height	4-5ft tall with 2-3ft spread
Care & Water	Once established, water once per week.
Flowering Time	June-September
Hardiness	Zones 3-11, plant 30" apart
Special Features and Notes	Toxic to dogs, cats, and horses if consumed. Attracts butterflies (especially Monarchs) and hummingbirds. Deer resistant.



### 5. White Yarrow (*Achillea lanulosa*)

Mature Height	2-3ft tall with 2ft spread
Care & Water	Once established, water once per week.
Flowering Time	June-mid September
Hardiness	Zones 2-9, plant 18" apart
Special Features and Notes	Flowers and leaves (when crushed) have a pleasant aroma. White yarrow is the original native variety but other varieties bloom yellow, pink, or red.



### 6. Winecups/Poppy Mallow (*Callirhoe involucrata*)

Mature Height	6in-1ft tall with 3ft spread
Care & Water	Once established, water once per week.
Flowering Time	March-June

## Shade Plant Guide Layout 1B

Hardiness	Zones 4-8, plant 3ft apart
Special Features and Notes	Ornate foliage that is attractive when not in bloom. Attracts butterflies and hummingbirds.